

Promega STR Kits (Internal Size Standard CXR ILS600 – 4-dye; CXR ILS 550 – 5-dye)

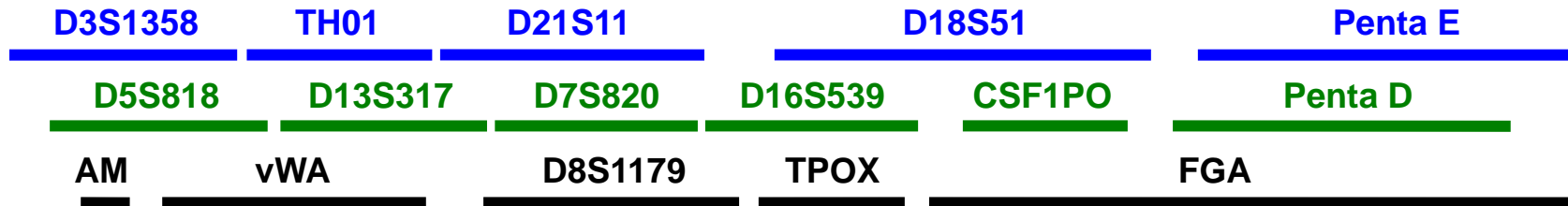
100 bp

200 bp

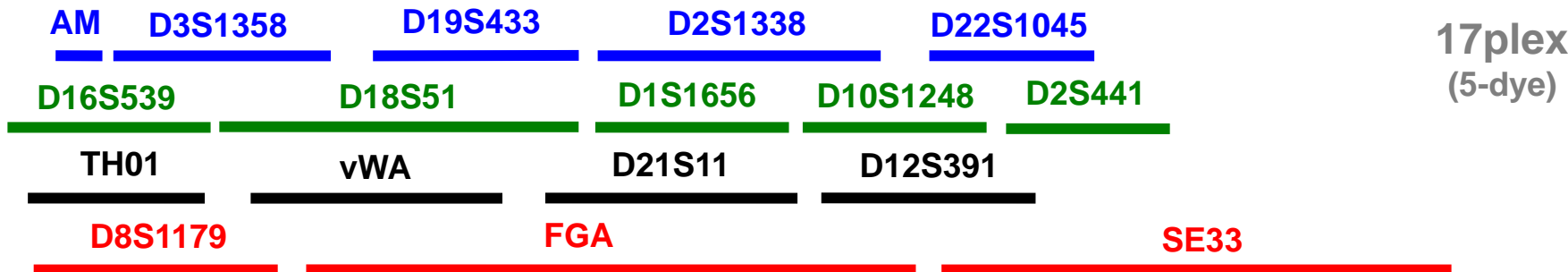
300 bp

400 bp

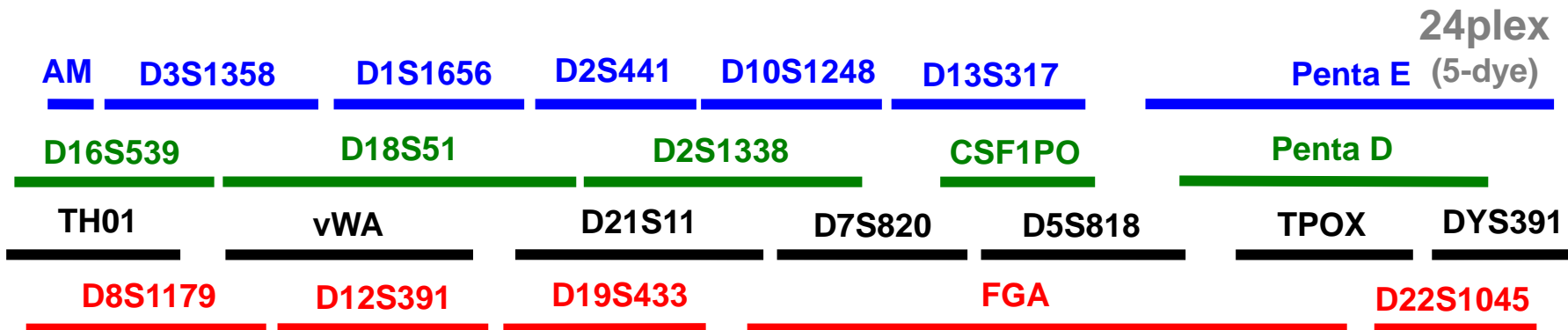
PowerPlex 16



PowerPlex ESI 17 Pro



PowerPlex Fusion



Life Technologies/ABI STR Kits (Internal Size Standard LIZ GS500 – 5-dye; LIZ GS600 – 6-dye)

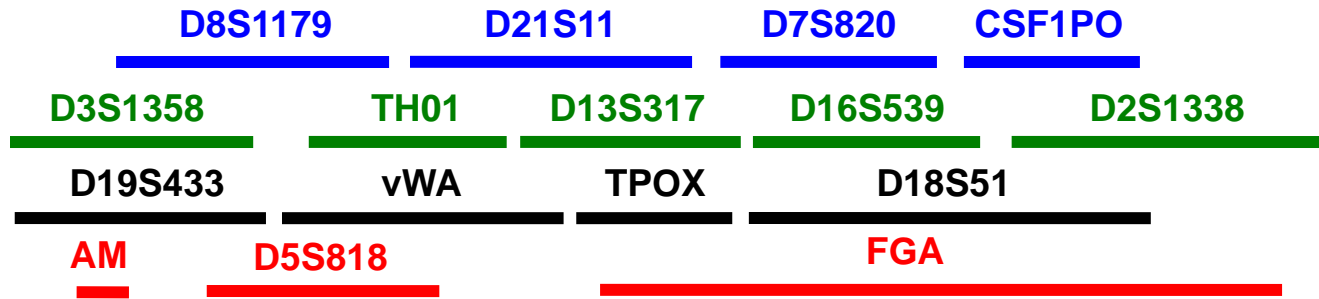
100 bp

200 bp

300 bp

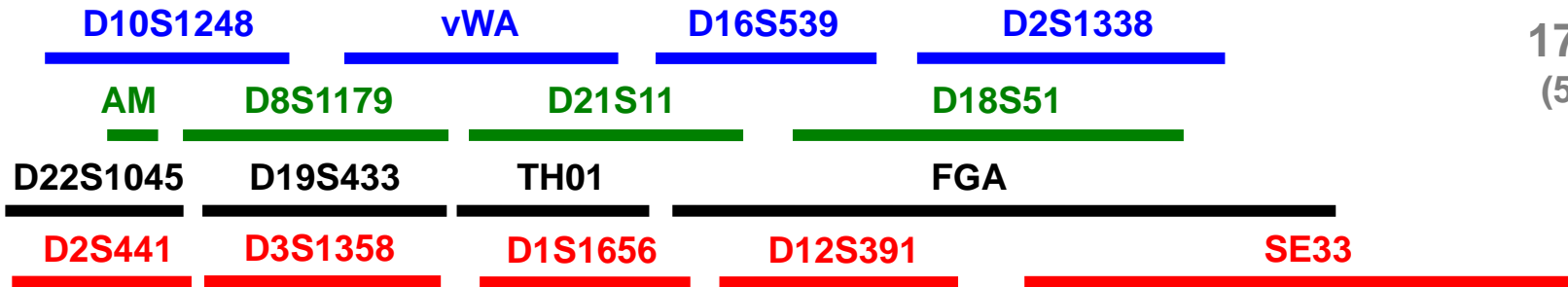
400 bp

Identifiler



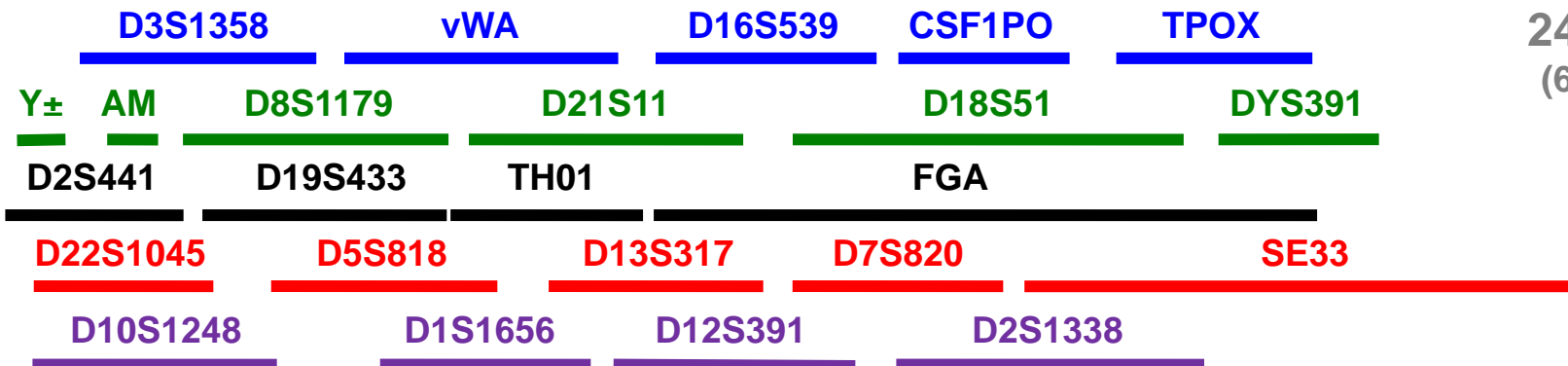
16plex
(5-dye)

NGM SELECT



17plex
(5-dye)

GlobalFiler



24plex
(6-dye)

Qiagen Investigator STR Kits (Internal Size Standard 550 BTO – 5th or 6th dye)

100 bp

200 bp

300 bp

400 bp

AM

TH01

D3S1358

vWA

D21S11

16plex
(5-dye)

IDplex

TPOX

D7S820

D19S433

D5S818

D2S1338

D16S539

CSF1PO

D13S317

FGA

D18S51

D8S1179

AM

TH01

D3S1358

vWA

D21S11

17plex
(5-dye)

ESSplex SE

D16S539

D1S1656

D19S433

SE33

D10S1248

D22S1045

D12S391

D8S1179

D2S1338

D2S441

D18S51

FGA

AM

TH01

D3S1358

vWA

D21S11

24plex
(6-dye)

24plex

TPOX

DYS391

D1S1656

D12S391

SE33

D10S1248

D22S1045

D19S433

D8S1179

D2S1338

D2S441

D18S51

FGA

D16S539

CSF1PO

D13S317

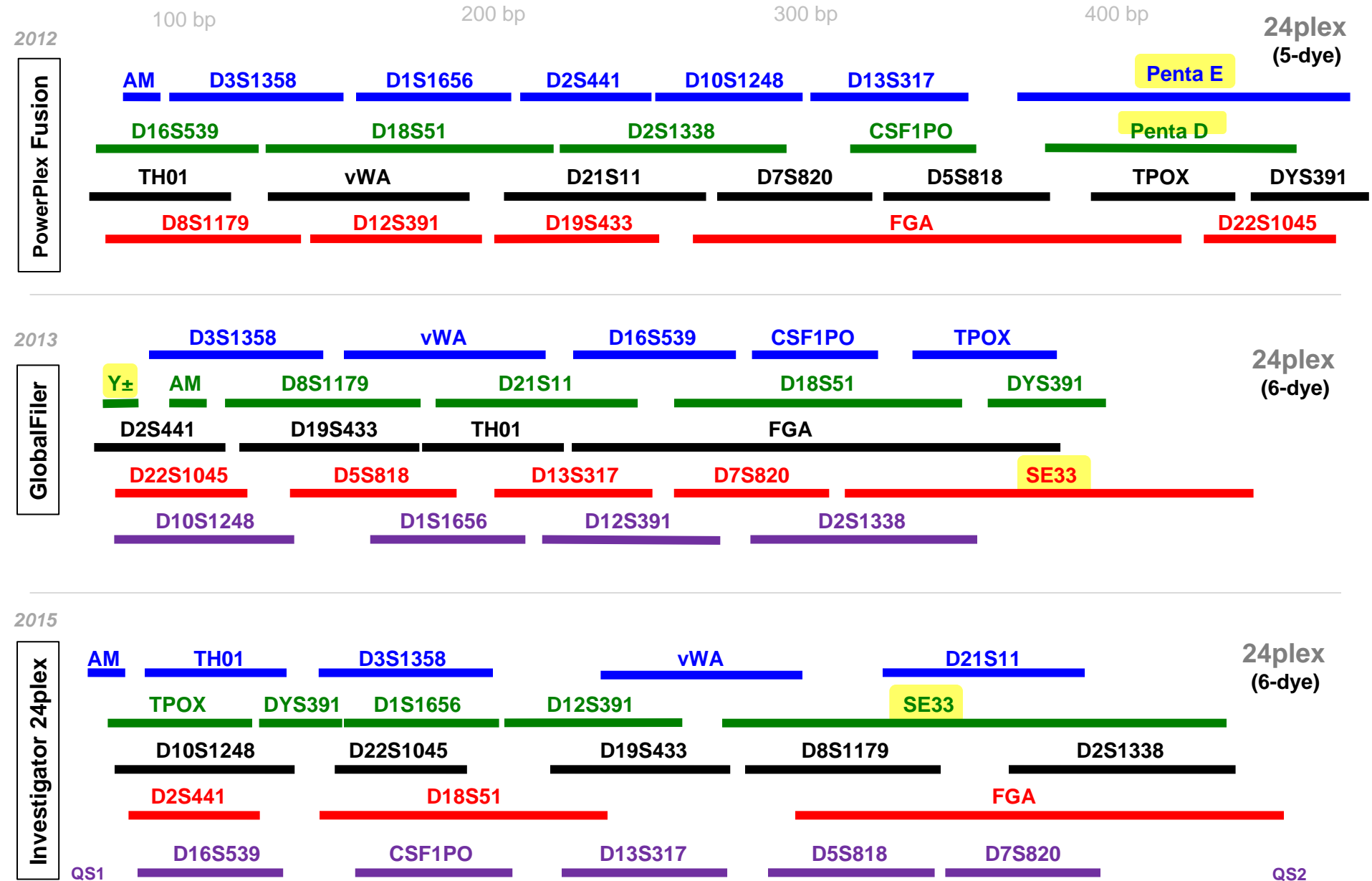
D5S818

D7S820

QS1

QS2

Relative Sizes of STR Loci in 24plex Kits



Y-STR Kits

100 bp

200 bp

300 bp

400 bp

Yfiler

DYS456

DYS389I

DYS390

DYS389II

DYS458

DYS19

DYS385 a/b

DYS393

DYS391

DYS439

DYS635

DYS392

Y-GATA-H4

DYS437

DYS438

DYS448

17plex
(5-dye)

PowerPlex Y23

DYS576

DYS389I

DYS448

DYS389II

DYS19

DYS391

DYS481

DYS549

DYS533

DYS438

DYS437

DYS570

DYS635

DYS390

DYS439

DYS392

DYS643

DYS393

DYS458

DYS385 a/b

DYS456

Y-GATA-H4

23plex
(5-dye)

Yfiler Plus

DYS576

DYS389I

DYS635

DYS389II

DYS627

DYS460

DYS458

DYS19

Y-GATA-H4

DYS448

DYS391

DYS456

DYS390

DYS438

DYS392

DYS518

DYS570

DYS437

DYS385 a/b

DYS449

DYS393

DYS439

DYS481

DYF387S1a/b

DYS533

27plex
(6-dye)