



Promega STR Kits (Internal Size Standard CXR ILS600 – 4-dye; CXR ILS 550 – 5-dye)

100 bp

200 bp

300 bp

400 bp

PowerPlex 16

D3S1358

TH01

D21S11

D18S51

Penta E

D5S818

D13S317

D7S820

D16S539

CSF1PO

Penta D

AM

vWA

D8S1179

TPOX

FGA

16plex  
(4-dye)

PowerPlex ESI 17 Pro

AM

D3S1358

D19S433

D2S1338

D22S1045

D16S539

D18S51

D1S1656

D10S1248

D2S441

TH01

vWA

D21S11

D12S391

D8S1179

FGA

SE33

17plex  
(5-dye)

PowerPlex Fusion

AM

D3S1358

D1S1656

D2S441

D10S1248

D13S317

Penta E (5-dye)

D16S539

D18S51

D2S1338

CSF1PO

Penta D

TH01

vWA

D21S11

D7S820

D5S818

TPOX

DYS391

D8S1179

D12S391

D19S433

FGA

D22S1045

24plex  
(5-dye)

Life Technologies/ABI STR Kits (Internal Size Standard LIZ GS500 – 5-dye; LIZ GS600 – 6-dye)

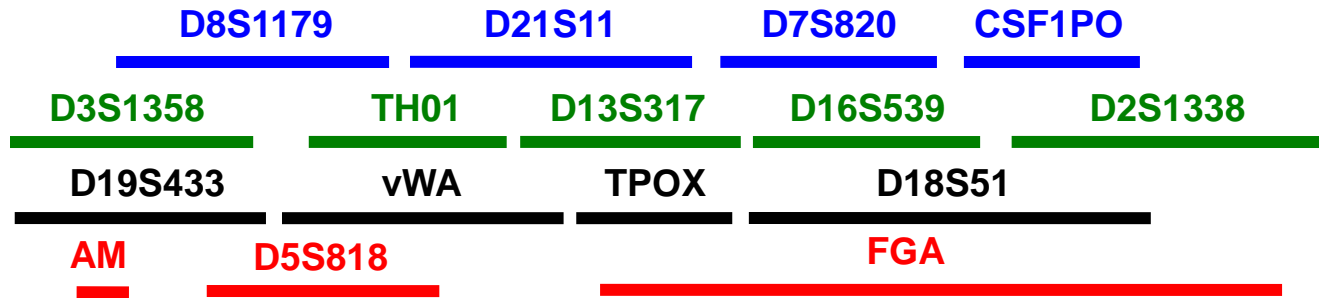
100 bp

200 bp

300 bp

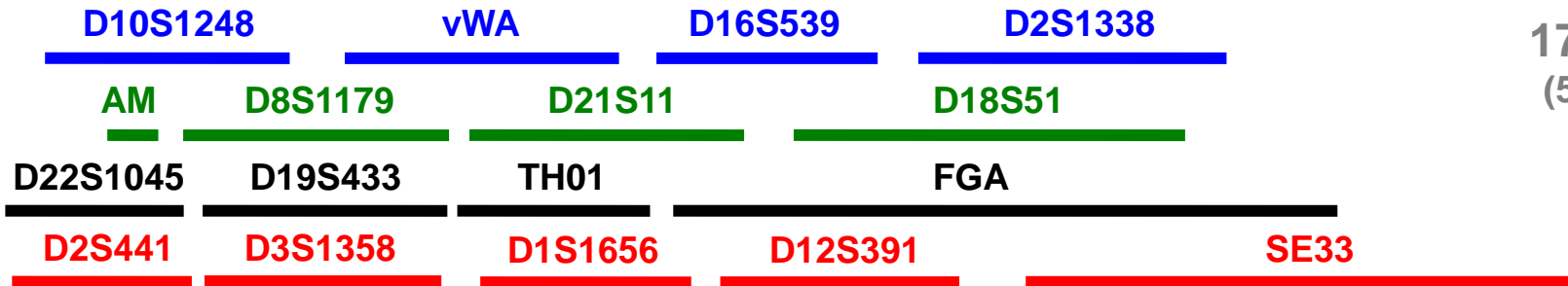
400 bp

Identifiler



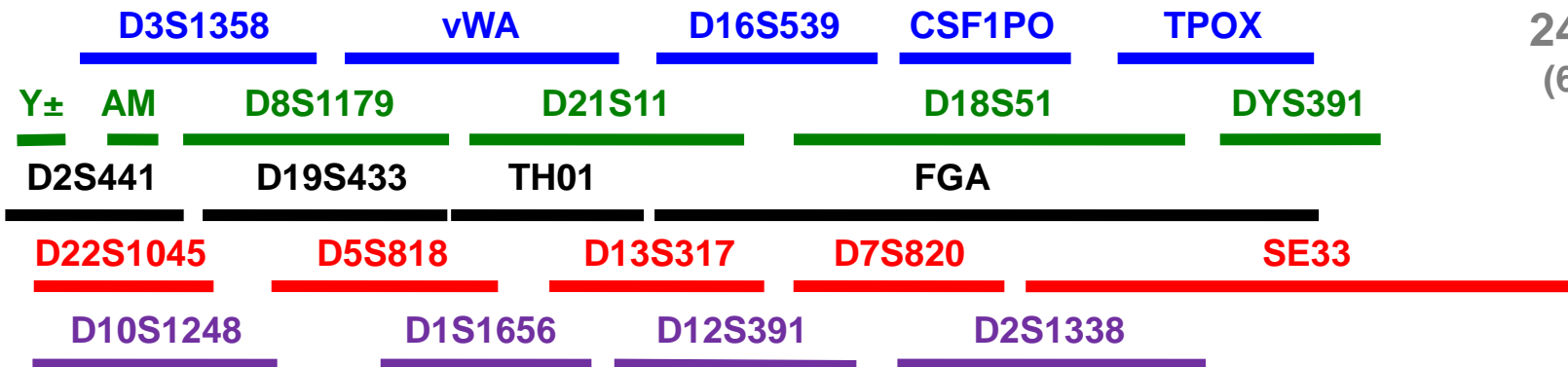
16plex  
(5-dye)

NGM Select



17plex  
(5-dye)

GlobalFiler



24plex  
(6-dye)

# Y-STR Kits

100 bp

200 bp

300 bp

400 bp

Yfiler

DYS456

DYS389I

DYS390

DYS389II

DYS458

DYS19

DYS385 a/b

DYS393

DYS391

DYS439

DYS635

DYS392

Y-GATA-H4

DYS437

DYS438

DYS448

17plex  
(5-dye)

PowerPlex Y23

DYS576

DYS389I

DYS448

DYS389II

DYS19

DYS391

DYS481

DYS549

DYS533

DYS438

DYS437

DYS570

DYS635

DYS390

DYS439

DYS392

DYS643

DYS393

DYS458

DYS385 a/b

DYS456

Y-GATA-H4

23plex  
(5-dye)

Yfiler Plus

DYS576

DYS389I

DYS635

DYS389II

DYS627

DYS460

DYS458

DYS19

Y-GATA-H4

DYS448

DYS391

DYS456

DYS390

DYS438

DYS392

DYS518

DYS570

DYS437

DYS385 a/b

DYS449

DYS393

DYS439

DYS481

DYF387S1a/b

DYS533

27plex  
(6-dye)